



**10 One Piece Live-Action Roles That Perfectly Capture Their Anime Originals:** The One Piece live-action series by Netflix has finally dropped anchor, and it's making waves for all the right reasons. Both critics and die-hard fans of the anime agree that this adaptation has set a new gold standard in the often-rocky world of live-action anime remakes.

Credit is due to an incredible ensemble cast who've breathed new life into Eiichiro Oda's iconic characters. From wardrobe to wigs, the actors look as if they've stepped right out of the anime. But it's not just about the visuals; the performances themselves are layered and deeply emotional, offering a human dimension to the fantastical world of One Piece.

Whether it's the Straw Hat pirates or their motley assortment of friends and foes, each character resonates with authenticity and emotional complexity, making the journey they embark upon all the more engrossing.

## 10 One Piece Live-Action Roles That Perfectly Capture Their Anime Originals

1. Iñaki Godoy (Monkey D. Luffy)
2. Emily Rudd (Nami)
3. Mackenyu (Roronoa Zoro)
4. Jacob Romero Gibson (Usopp)
5. Taz Skylar (Sanji Vinsmoke)
6. Alexander Maniatis (Captain Kuro/Klahadore)
7. Craig Fairbrass (Chef Zeff)
8. McKinley Belcher III (Arlong)
9. Morgan Davies (Koby)
10. Celeste Loots (Kaya)

Iñaki Godoy (Monkey D. Luffy)



***Iñaki Godoy (Monkey D. Luffy)***

In the live-action One Piece series, Iñaki Godoy had the daunting task of portraying one of shonen anime's most iconic characters: Luffy. Remarkably, he nailed it. Godoy's interpretation of the elastic pirate is arguably the standout performance in the entire show.

He skillfully embodies all facets of Luffy's multifaceted persona—his infectious enthusiasm, his comedic lack of awareness, and his deep-seated loyalty to his comrades. Through Godoy's portrayal, viewers are convinced that Luffy is a flawed but endearing hero whose unbreakable spirit is as compelling as it is inspiring.

**Emily Rudd (Nami)**



*10 One Piece Live-Action Roles That Perfectly Capture Their Anime Originals - **Emily Rudd** (Nami)*

Emily Rudd delivered a compelling performance as Nami, the tsundere navigator in Netflix's live-action adaptation of One Piece. The series actually introduced Nami an arc earlier than in the original, allowing Rudd extra screen time to capture the essence of the character. Her nuanced portrayal showcased Nami as someone who may appear tough and distant, yet is deeply caring and emotionally complex. Rudd successfully communicated these layers right from her first appearance, earning her a well-deserved status as the series' standout female character.

Mackenyu (Roronoa Zoro)



## 10 One Piece Live-Action Roles That Perfectly Capture Their Anime Originals | 4



### *10 One Piece Live-Action Roles That Perfectly Capture Their Anime Originals - **Mackenyu** (Roronoa Zoro)*

Mackenyu Maeda, popularly known as Mackenyu, brought a fresh take on the iconic character, Roronoa Zoro, in the Netflix adaptation of One Piece. While the manga and anime portrayed Zoro as an unyielding and intense character with his unique three-blade style, Mackenyu infused the role with a raw intensity. He showcased the swordsman's strength and gravitas, effectively capturing Zoro's underlying charisma. Moreover, his dynamic with Nami, filled with witty banter and mutual understanding, especially when it came to Luffy, added another layer of depth to the series.

Jacob Romero Gibson (Usopp)



***Jacob Romero Gibson (Usopp)***

In the Netflix adaptation of One Piece, actor Jacob Romero Gibson gave a stellar performance as Usopp, the quirky sharpshooter. He masterfully encapsulated Usopp's eccentricities and comedic flair, much like Luffy in the original series. Gibson made the character irresistibly endearing and captivating.

Usopp's deep-seated wish to safeguard Kaya instantly drew audiences to him, making him a standout character from the get-go. Furthermore, Gibson's portrayal was particularly enchanting during scenes on the Baratie restaurant ship, where Usopp beguiled Kaya and other guests with his exaggerated stories, all while donning extravagant outfits and eyewear.

Taz Skylar (Sanji Vinsmoke)



*10 One Piece Live-Action Roles That Perfectly Capture Their Anime Originals - **Taz Skylar**  
(Sanji Vinsmoke)*

Taz Skylar nails his portrayal of Sanji Vinsmoke in the live-action series, bringing depth and complexity to the role. Thankfully, the creators opted to dial down Sanji's over-the-top womanizing traits, making him come across as a more genuine character without losing his essence.

In the series, Sanji is expertly rendered as a devoted chef who might argue with Zeff and poke fun at thankless patrons, but his innate goodness shines through, fitting seamlessly into the Straw Hat pirate crew. Skylar's performance captures a multidimensional Sanji who is as compelling as he is flawed, projecting intensity, vulnerability, and self-assurance with remarkable on-screen charisma.

Alexander Maniatis (Captain Kuro/Klahadore)



*10 One Piece Live-Action Roles That Perfectly Capture Their Anime Originals - **Alexander Maniatis (Captain Kuro/Klahadore)***

Actor Alexander Maniatis brings an intriguing depth to the character of Captain Kuro. As the mastermind behind the Black Cat pirate crew, Kuro feigns his own demise and adopts the persona of “Klahadore,” a seemingly devoted butler to Kaya. But his objectives are far from altruistic; he has his sights set on Kaya’s family wealth.

This iteration of Kuro diverges from the anime by incorporating elements of a horror movie villain. Beyond his assassin capabilities and feline motif, he exudes an unsettling aura as he stalks Kaya, Nami, and Usopp through the mansion under the cover of darkness. This unique blend of characteristics makes him an unexpectedly captivating villain in the series, replete with chilling dialogue and a dual identity that keeps the audience on the edge of their seat.

Craig Fairbrass (Chef Zeff)



***Craig Fairbrass (Chef Zeff)***

Baratie arc introduced us to the captivating live-action rendition of Chef Zeff, the patriarchal figure of the Baratie restaurant ship. Brilliantly played by Craig Fairbrass, Zeff is depicted as a gruff yet compassionate leader who harbors a deep, unspoken affection for Sanji, serving as a quasi-father figure to him.

While Zeff can be intimidating and demanding, his persona also exudes an endearing quality typical of a tsundere character. His tough-love moment, encouraging Sanji to leave the crew, epitomizes this complex emotional layering. Additionally, Fairbrass brings a compelling depth to Zeff during the character's poignant flashback scenes, demonstrating a strained yet courageous demeanor as he tries to inspire a young Sanji.

McKinley Belcher III (Arlong)



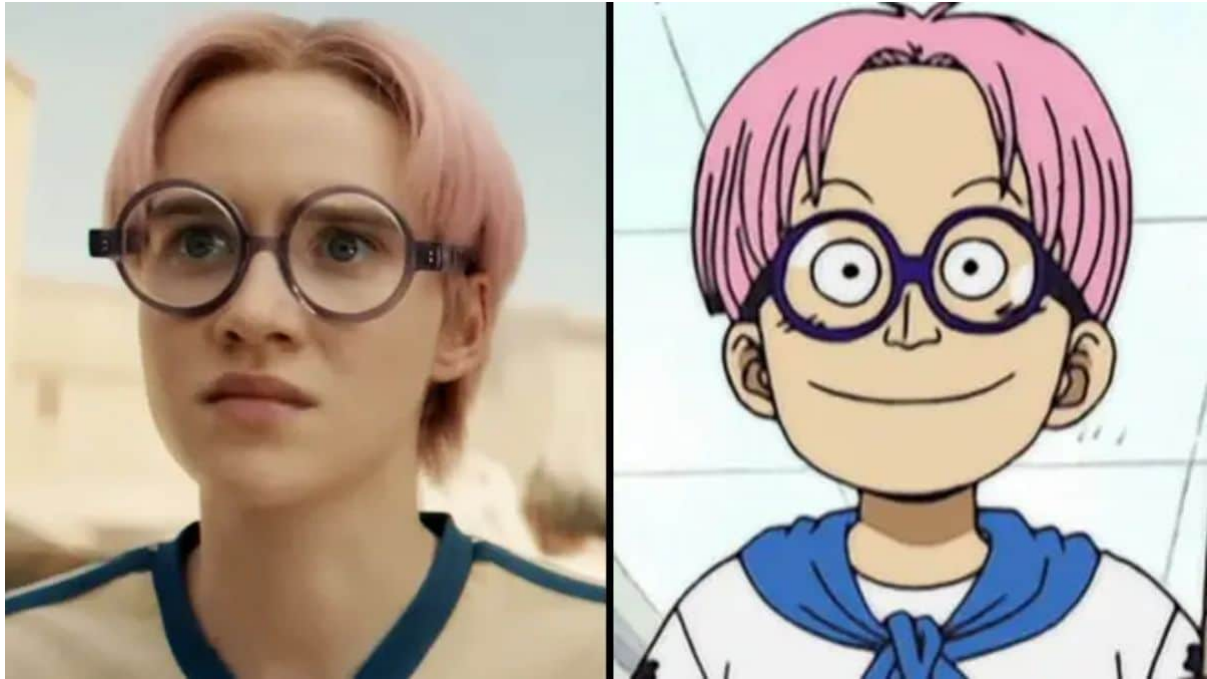


*10 One Piece Live-Action Roles That Perfectly Capture Their Anime Originals - **McKinley Belcher III (Arlong)***

McKinley Belcher III absolutely nails his role as Arlong, the fish-man pirate, going well beyond an impeccably detailed costume and top-notch prosthetics. He captures the raw ferocity and daunting intensity of the character, making every scene he's in downright electric. You can feel the tension in the room as he delivers cutting lines through even more cutting prosthetic teeth.

Interestingly, the creators of the Netflix series chose to introduce Arlong in the Baratie storyline rather than in his original Arlong Park arc. This was a calculated move that paid off, as it allowed Belcher to fill the void left by Don Krieg's character with remarkable menace. This strategic shift in character placement had an undeniably powerful impact, enriching the plot and adding a layer of depth and urgency. All in all, an outstanding creative choice, brilliantly executed.

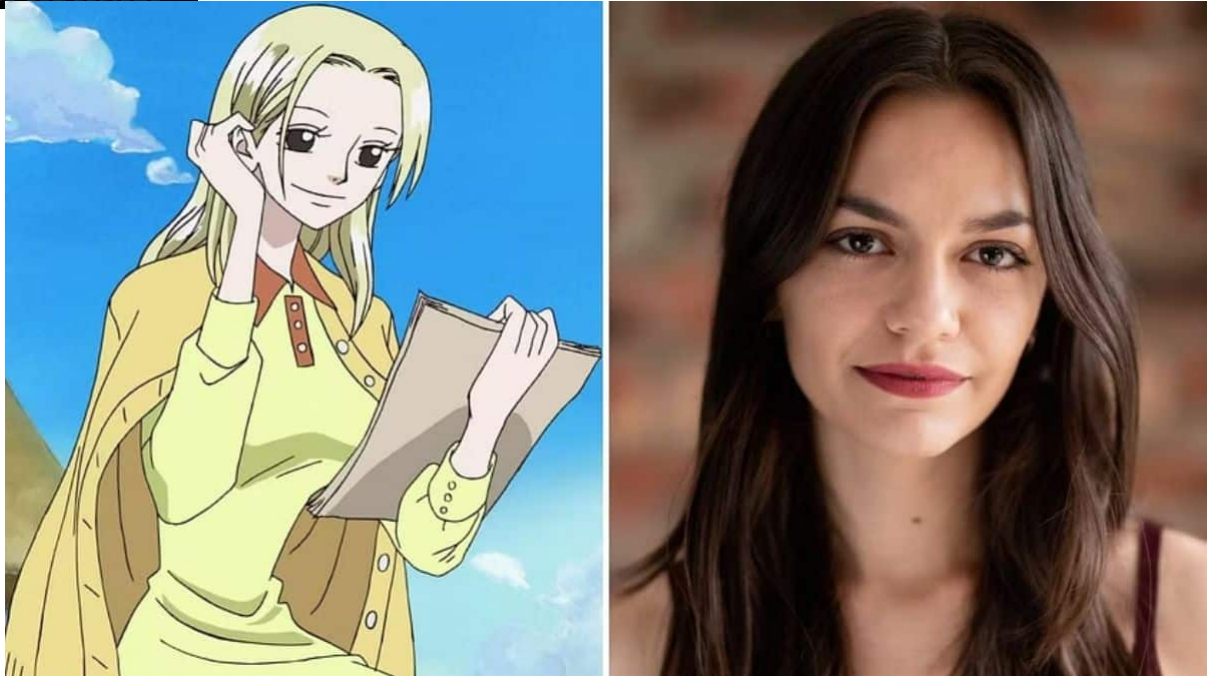
## Morgan Davies (Koby)



### *10 One Piece Live-Action Roles That Perfectly Capture Their Anime Originals - **Morgan Davies (Koby)***

Morgan Davies totally nailed it when he brought the character Koby to life in the live-action One Piece series. He didn't just copy-paste the Koby we know from the manga and anime; he gave us a richer version while staying true to the essence of the character. Koby, portrayed as a gutsy but nervous young Marine, serves as the perfect contrast to Luffy. Davies' on-point performance leaves no doubt: Koby may be a bit shaky in the face of adversity, but he's got the spirit to keep pushing for what he believes in.

## Celeste Loots (Kaya)



***Celeste Loots (Kaya)***

Actor Celeste Loots brilliantly portrayed her minor character in the Syrup Village arc. As Kaya, she showcased the complexities of a gentle and trusting young girl who was blindsided by the deceit of her trusted butler, Klahadore. Discovering his true identity as Captain Kuro was a heart-wrenching twist for her.

Though Kaya wasn't a fighter, her fear during Kuro's reign of terror was palpable. However, thanks to the unwavering support of the Straw Hats, she discovered an inner strength, allowing her to champion justice. As a token of her gratitude, she gifted the Straw Hats with the iconic Going Merry. Post-adventure, a subtle shift was evident in Kaya's demeanor, balancing joy with the weight of her experiences.

**Also Read: 10 Anime Heroes Who Became Villain**